



Morecambe Road School
Morecambe Road
Morecambe
LA3 3AB

01524 414384



Morecambe Road School

Moving on

A guide to Transition



This is not meant to be an exhaustive list. Most websites have further links that you can follow.

www.after16.org.uk

Site for young people who have an impairment or disability and are wondering what opportunities and services there should be when they leave school.

www.disabilityalliance.org

Offers information, advice, publications and training on disability benefits.

www.drc-gb.org

The Disability Rights Commission aims to stop discrimination and promote equality of opportunity for disabled people.

www.familyfundtrust.org.uk

Funding, information and support for families with severely disabled or seriously ill children.

www.ipsea.org.uk

The Independent Panel for Special Educational Advice helps parents understand Local Authorities' legal duties to assess and provide for children with special educational needs.

Loyne Specialist School
Sefton Drive
Lancaster, LA1 2PZ
01524 64543

Lancaster & Morecambe
College of FE
Morecambe Road
Lancaster, LA1 2TY
01524 66215

Kendal College
Milnthorpe Road
Kendal, LA9 5AY

Myerscough College
St Michaels Road
Bilsborrow
Preston, PR3 0RY
01995 642222

Transition Service

Planning for Transition

What happens?

In order to make an informed choice, the young person will need to know all of the options that are available to them in our area. They will need to think about what they are best at and what they would most like to do. It is also important for them to think about the extra support they need because of their learning disability.

Transition is a process bringing together the people who will ensure that you and your child plan ahead for the future. Identifying key individuals and responsibilities during each stage of the process can sometimes be helpful for a parent. The list of the following people may be helpful during the transition process, though this is not a complete list:

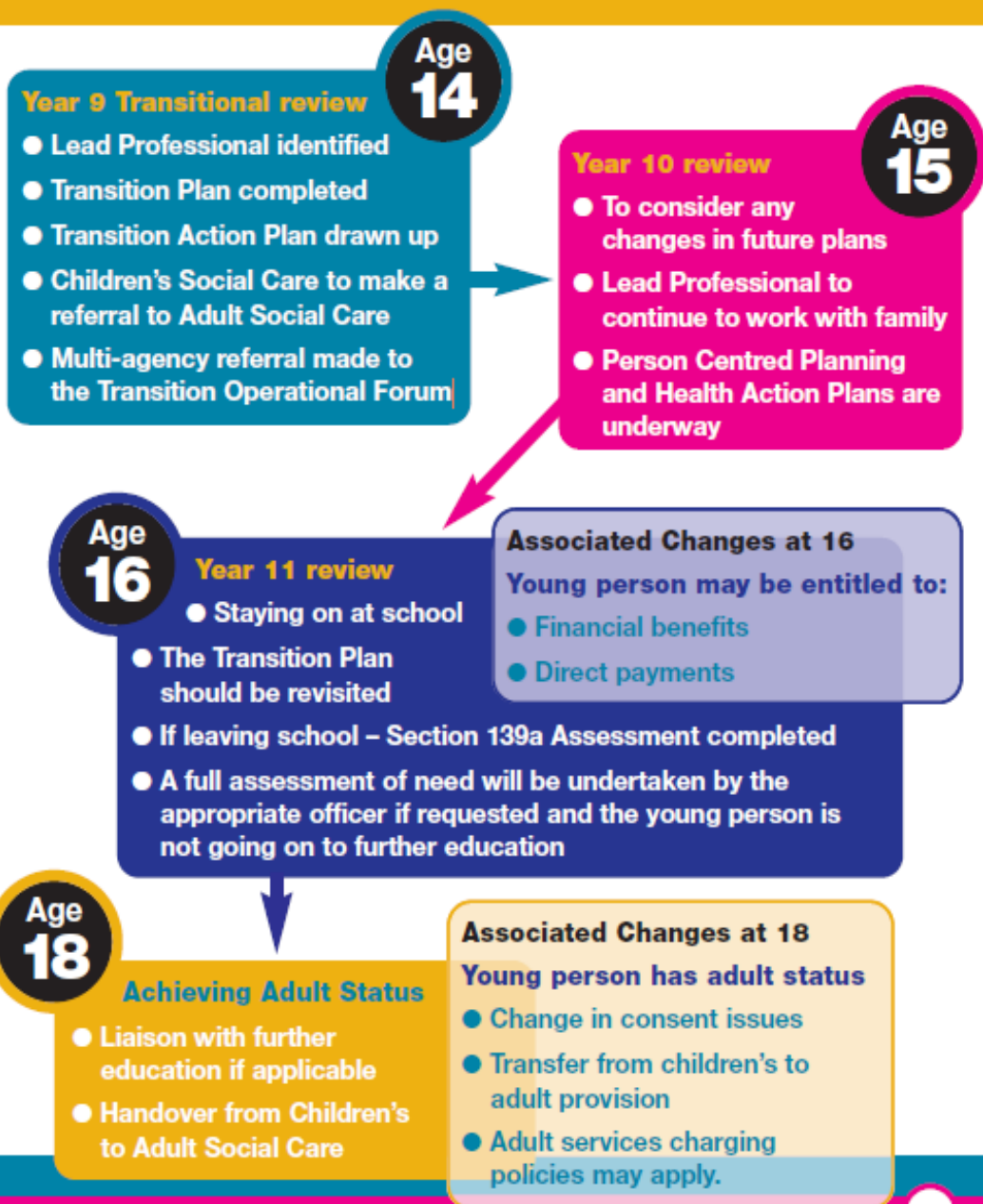
- Schools and Colleges
- Children's Social Care
- Personal Advisors
- Health Professionals
- Voluntary & Community Sector
- Adult Social Care
- Primary Care Trust



Transition refers to the period of time it takes for a young person to move into adulthood. The transition from school or college is an important time for all young people and their families, as they will start to prepare themselves for choices beyond school and make some important decisions about their future, including where they might want to live as they gain adult independence.

This can often be an anxious and worrying time for parents or carers as you consider the future for your son or daughter. It can also be a time when the support package you have been used to may change.

Leaving school and deciding what to do next is difficult for all young people, but it can be even more complex if someone is disabled or has a learning disability. There are lots of options in further education for a young person with a learning disability to choose from.



Pupils can leave school legally at the end of June in the school year when they reach the age of 18. However, education includes work or training leading to an accredited qualification such as an Apprenticeship.

The main options include:

Sixth Form

You might consider the 3 year provision offered by local Special School provision in their FE units. Parents need to contact the provider directly and arrange a visit. They will advise you of the application process and when this should be made.

Employment and/or Training

Your son or daughter may need support to enter employment or training. Some organisations can provide help and support with this, and remember if your son/daughter is aged 18 or over, you can also contact the Disability Employment Advisor based at Jobcentre Plus.

Transition visits

During Year 11 your son or daughter will attend transition visits to their intended destination. These visits occur once a place has been agreed for Post 16 education. These visits help reduce any anxieties and build familiarisation and your son or daughter will be accompanied by a member of our staff.

College

Colleges around Lancashire and Kendal offer a range of courses leading to qualifications. Some include work experience. You will be offered advice and guidance on the different courses as well as other aspects such as travel arrangements and facilities.

Transitions Adviser

A Transitions Adviser for young people and adult with Learning Difficulties and Disabilities (LDD) who provides a free and confidential support service in schools and colleges for all young people who live in North Lancashire.

Services offered

One-to-one careers guidance interviews (parents/carers are also welcomed)

- discuss ideas about what they might want to do after completing statutory education
- discuss and work out how they might put their ideas into practice
- at the end of their interview an Individual Learning and Development Plan (ILDP) is produced with an action plan that they feel comfortable to work with ILDP is reviewed to look at progress and whether any changes need to be made.

Year 9 & Year 11

Careers information,

Work with parent/carers

Inform parents, guardians, carers and pupils on options at 11+ and information and support on non-careers services.

Annual and Transition Review Meetings

The Transitions Adviser attends these to assist the young people and parents/carers to plan their future. Information gathered in these meetings will contribute towards the Transitions Plan.

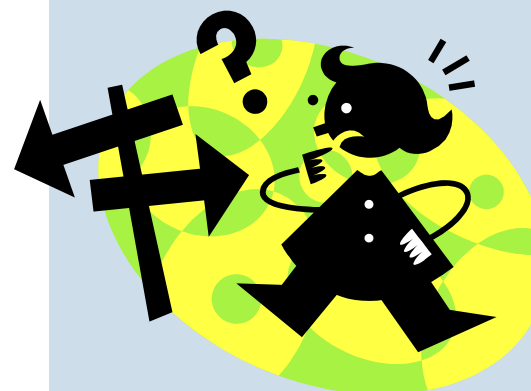


Year 9—Age 14

What happens?

The process of planning for a young person's transition to adulthood begins at the Y9 Transition Review.

This is held during the Y9 Annual Review of the EHC Plan. It is important at this stage that all of the different agencies are made aware of the young person's needs and the role that they may be required to play, as the young person approaches adulthood.



Here at school

If a professional (for example – Educational Psychologist) can't attend, they will write a report and send it to the Head Teacher of your son/daughters school.

A person centred approach means that planning starts with the young person, not the services. It will take into account the young person's wishes and ambitions.

The main purpose of the transition review meeting is to help the individual plan to achieve their hopes, dreams and potential. It tries to maximise their education, training and employment opportunities, as well as encouraging new relationships and independent living.

At the transition review, a Transition Plan is produced. This records the agreed action points needed to support the young person's needs and future ambitions. It also identifies who has responsibility for ensuring that these actions are carried out.

Year 10—Age 15

Annual Review Meeting

As in Y9, the Transition Review will be held during the Annual Review and the young person, parent/carer and appropriate agencies will continue to work together. The Transition Plan should be updated to reflect any changes.

The young person will also have a 1:1 meeting with the Assistant Head of KS4 to ensure they are fully aware of opportunities available to them for Post 16 progression.

Some changes at 16

A Young person may be entitled to:

- Additional financial benefits
- Direct Payments
- Apply for PIP allowance

Year 11—Age 16

Annual Review Meeting

Depending upon whether or not the young person is leaving school at the end of the year, the final review at school needs to ensure that everything that should happen, does happen before the young person leaves school. The most important of which is the amendment of the Education and Health Care Plan, which is carried out by the Lead Professional.

The purpose of the EHC Plan is to highlight the support and future educational needs required by the young person. This plan then accompanies the young person as they move on into a Further Education College or Training Provider and helps the college or agency put in place the help required.

What should happen at 18?

Some young people will choose to remain in full time education until they are 19. The Personal Advisor will need to ensure that they have liaised effectively with any Further Education provider and the various Social Care departments.

If the young person receives support from Children's Social Care, it is important that their Social Worker has followed the transition protocol. This will ensure a smooth handover to adult social care. It is also important that parents/carers, are fully aware of the changes to services that your child will receive.

If the young person wishes to remain in contact with their Transitions Advisor they can do so until their 25th birthday.

Some changes at 18

- The young person has adult status
- Change in consent issues
- Transfer from children's to adult provision
- Adult services charging policies may apply
- May be entitled to individual budgets
- A Disability Employment Adviser at Jobcentreplus

